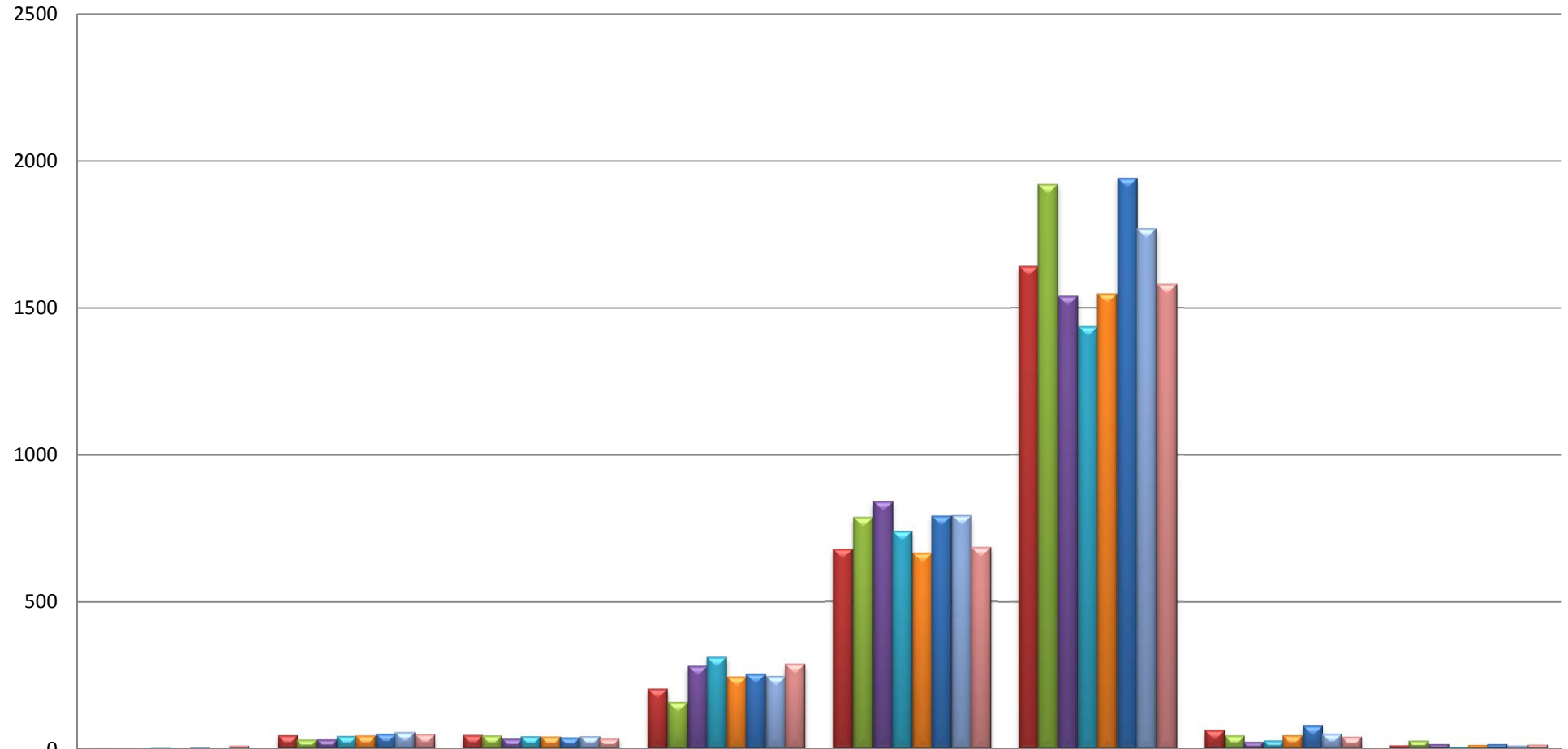
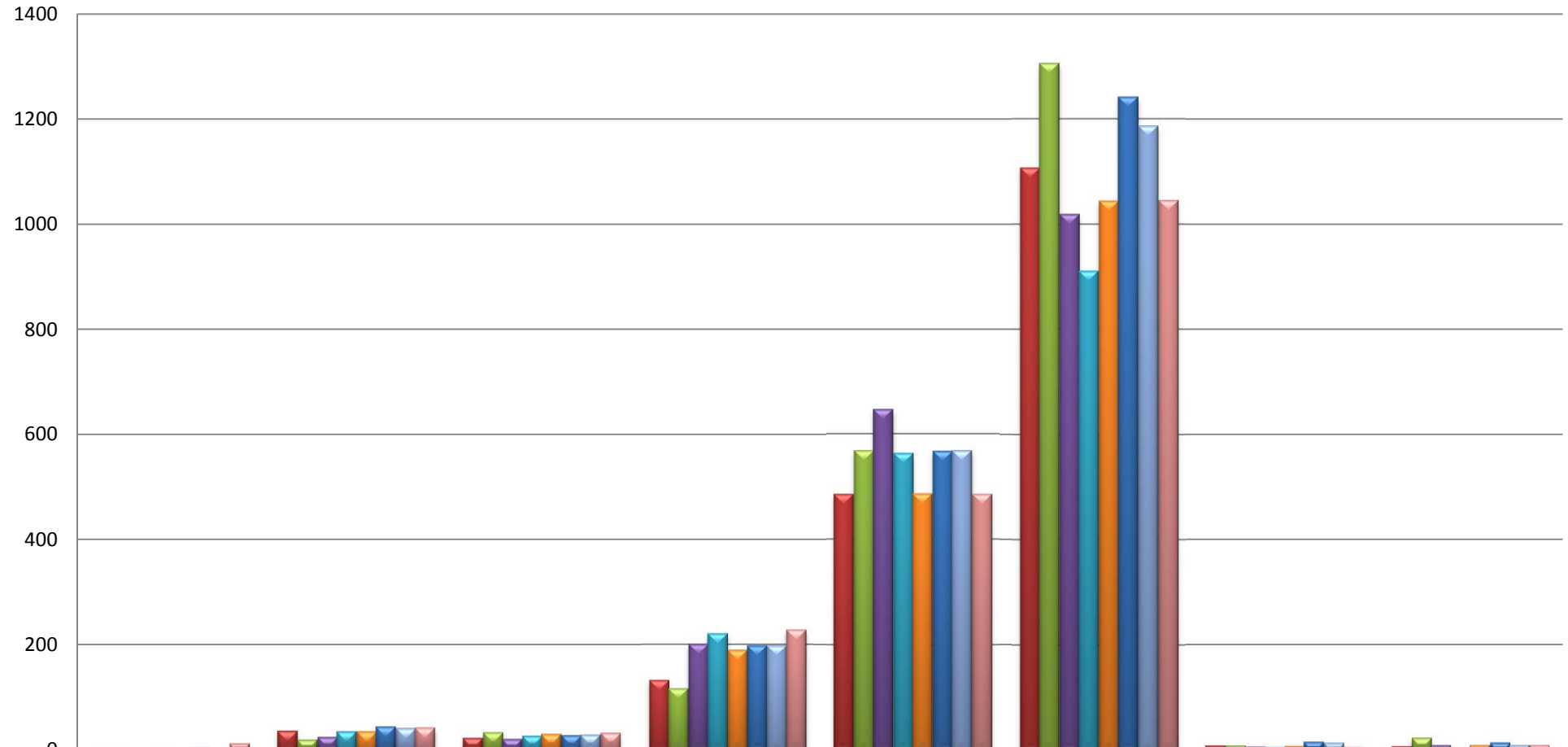


## All SBSO Areas Part 1 Crimes Trends 2007 - 2014



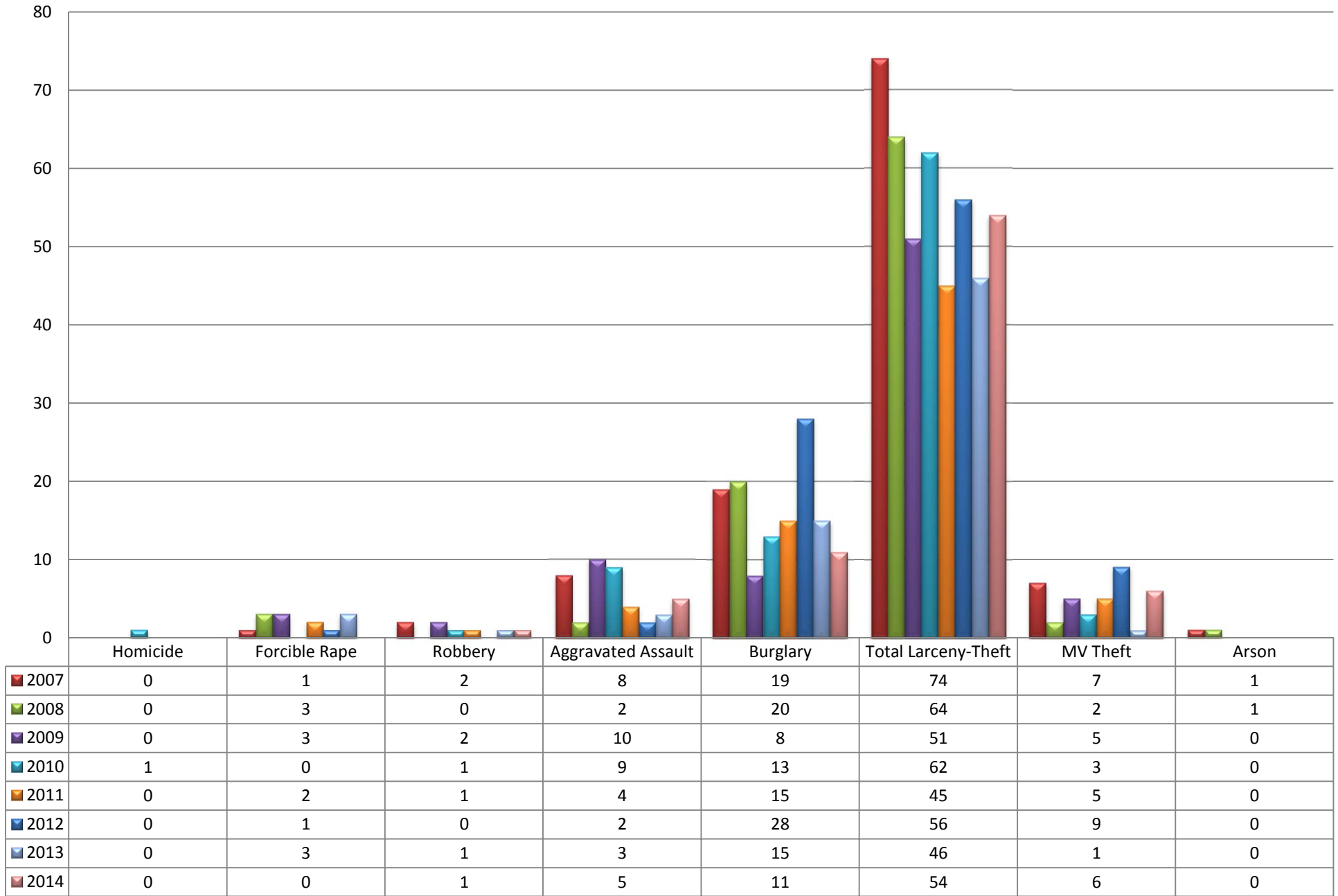
	Homicide	Forcible Rape	Robbery	Aggravated Assault	Burglary	Total Larceny-Theft	MV Theft	Arson
2007	2	45	47	203	679	1642	63	11
2008	2	30	45	158	786	1921	44	26
2009	0	31	35	280	840	1541	23	14
2010	3	43	43	310	740	1437	28	5
2011	1	44	42	244	665	1549	45	12
2012	4	51	39	254	791	1942	78	14
2013	1	56	43	246	793	1770	51	10
2014	11	49	35	287	685	1581	40	13

## Unincorporated Areas Part 1 Crimes Trends 2007 - 2014

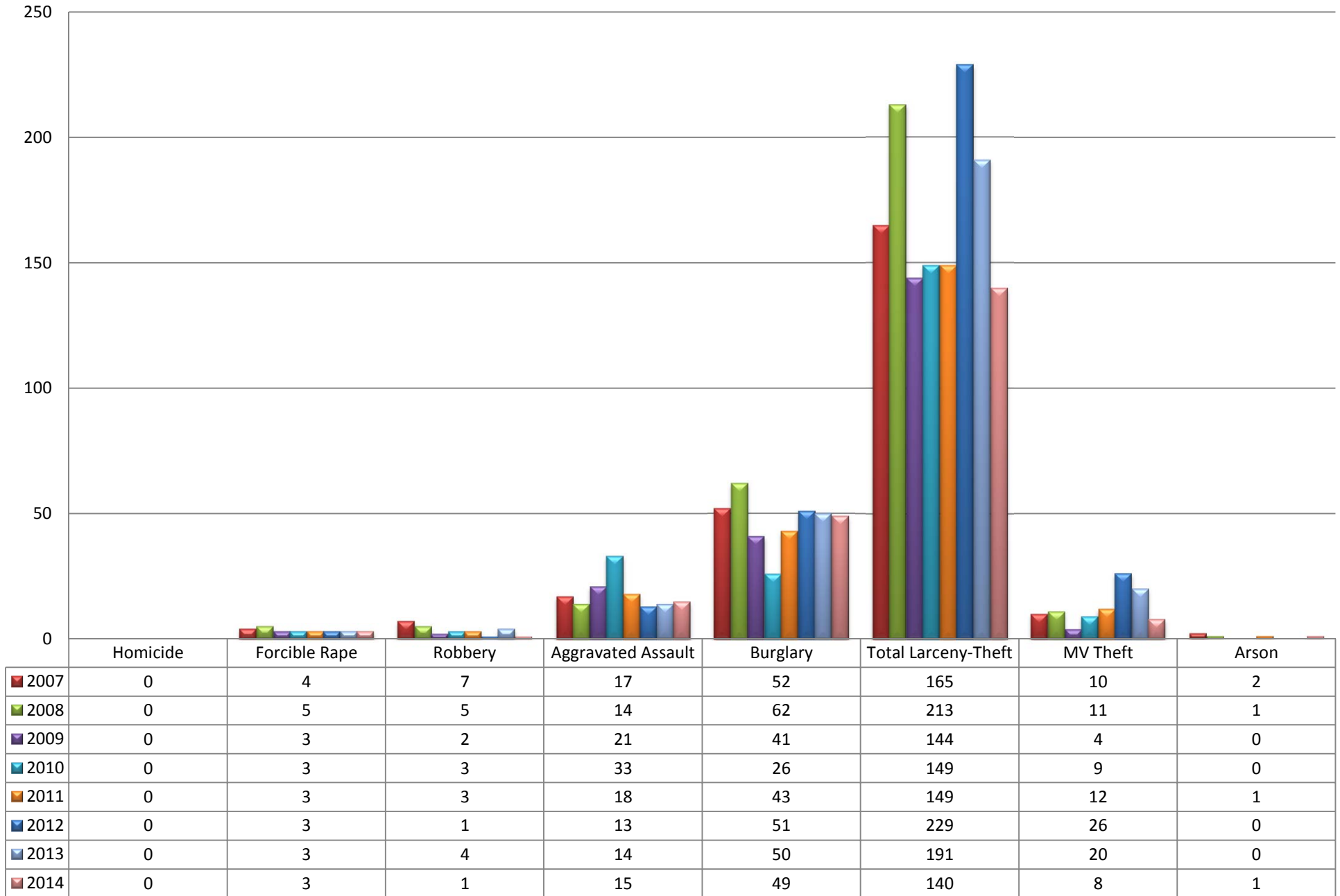


	Homicide	Forcible Rape	Robbery	Aggravated Assault	Burglary	Total Larceny-Theft	MV Theft	Arson
2007	2	35	23	133	486	1108	8	7
2008	2	19	33	117	569	1307	8	23
2009	0	24	21	201	647	1020	6	9
2010	2	34	27	221	564	912	5	4
2011	1	34	30	190	487	1045	7	9
2012	4	43	28	198	568	1243	15	14
2013	1	40	29	198	569	1188	13	9
2014	11	41	32	228	486	1046	5	9

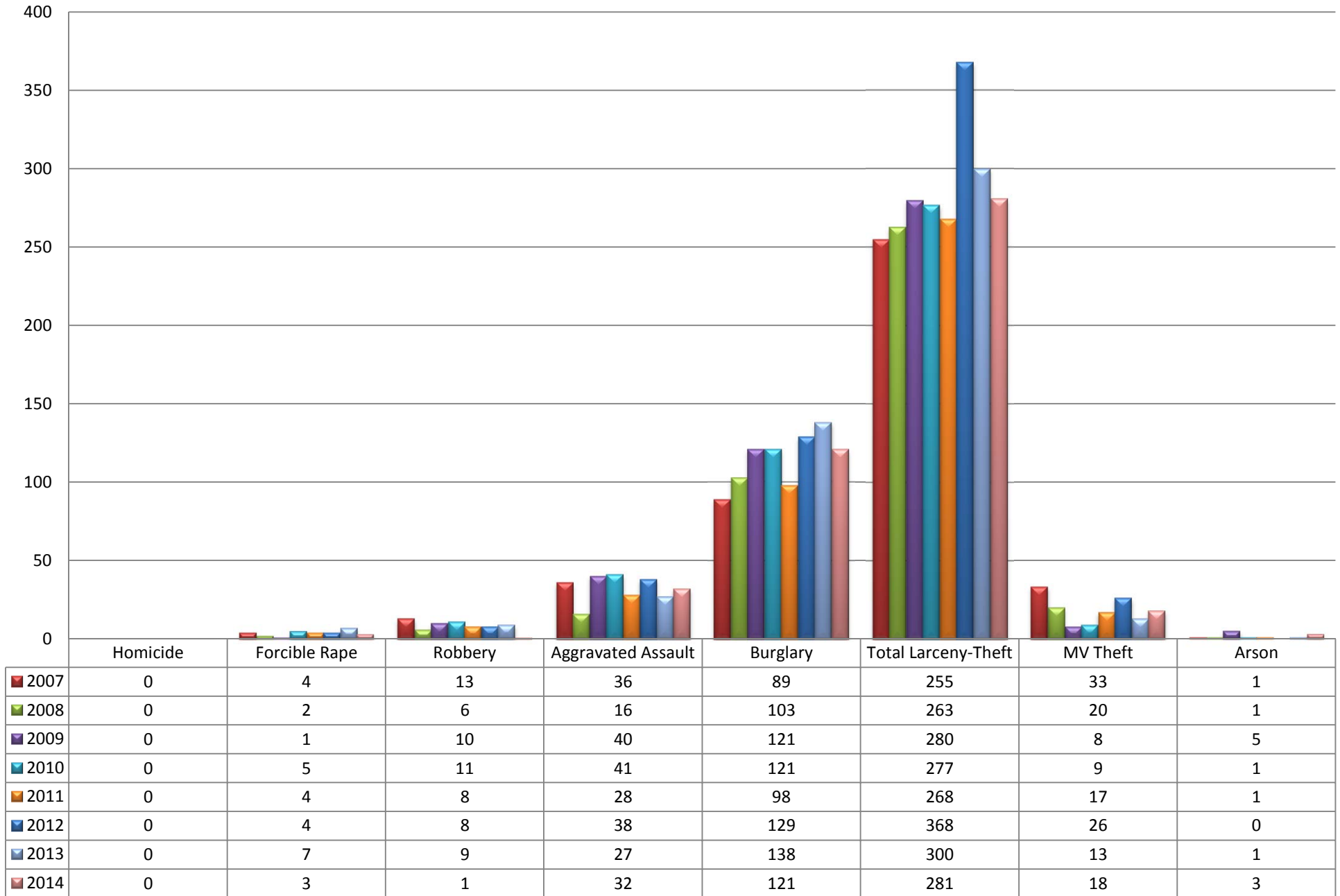
## Buellton Part 1 Crimes Trends 2007 - 2014



## Carpinteria Part 1 Crimes Trends 2007 - 2014



## Goleta Part 1 Crimes Trends 2007 - 2014



# Solvang Part 1 Crimes Trends 2007 - 2014

